



# Granite/Metal Push Button Panel (Buspro) User Manual

Version: 1.0.0

Published on Aug. 9, 2019

## Content

<b>Legal Statement</b> .....	I
<b>Update History</b> .....	II
1 Introduction.....	1
2 Basic Setting.....	3
3 Button Setting.....	4
3.1 Button Mode Setting.....	4
3.2 Button Status Setting.....	4
3.3 Target Setting.....	5
4 Color Setting.....	8
4.1 Button Status Color Setting .....	8
4.2 White Balance Adjustment .....	9
5 Backlight Setting.....	10
6 Sleep Group Setting .....	11

## Legal Statement

HDL has all the intellectual property rights to this document and contents thereof. Reproduction or distribution for third parties are prohibited without written authorization from HDL. Any infringement of HDL's intellectual property rights will be investigated the legal liability.

The contents of this document will be updated as the updates of product versions or other reasons. Unless otherwise agreed upon, this document is to be used as a guidance only. All the statements, information and recommendations in this document makes no warranty expressed or implied.

HDL Automation Co., Ltd.

## Update History

The form below contains the information of every update. The latest version contains all the updates of all former versions.

No.	Version	Update Information	Date
1	V1.0.0	Initial release	Aug. 9, 2019

## 1 Introduction

Granite/Metal Push Button Panel (hereinafter referred to as “Granite”) is specially designed for controlling smart devices, and have two types - EU and US.

This user manual takes US type as an example to introduce the configuration process of Granite in Buspro Setup Tool 2. The following tools might be needed:

- Granite/Metal Push Button Panel (Buspro)
- A computer with Buspro Setup Tool 2
- 1-Port Programming Gateway (HDL-MBUS01IP.431) connected to the router
- Dedicated Buspro cable(s)

### Notice:

- ① Please refer to the datasheet attached to the product for the information of installation, wiring, specifications, etc.
- ② The pictures in this user manual are for reference only. The actual product should prevail.
- ③ The button ID and backlight ID are shown in Figure 1-1. For EU panel, 1-4 are buttons, 5-6 are backlights; while for US panel, 1-6 are buttons, 7-10 are backlights.

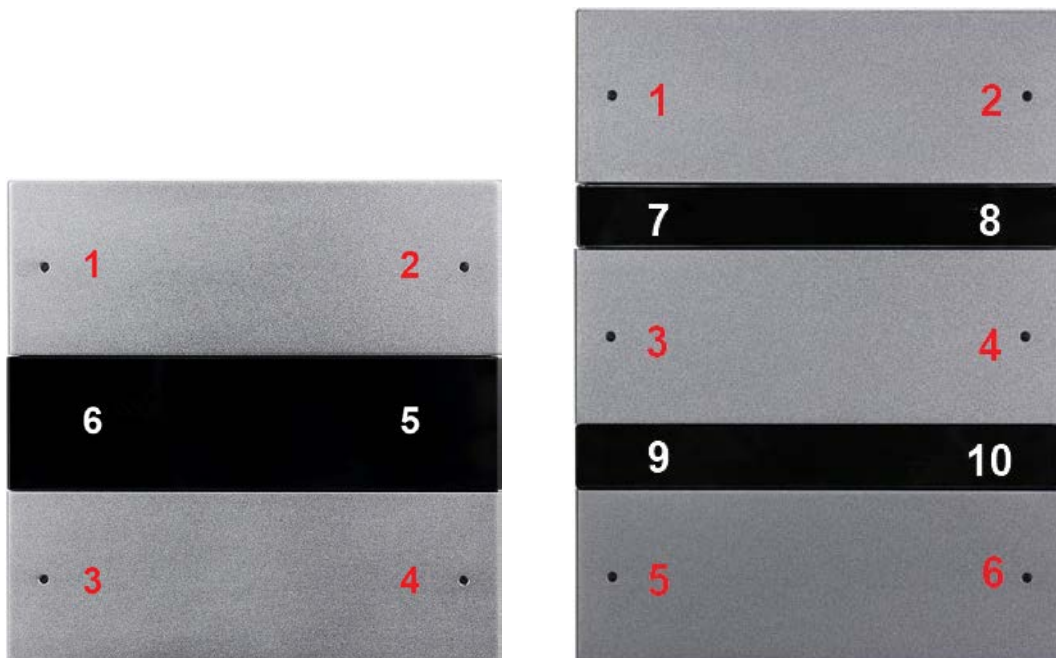
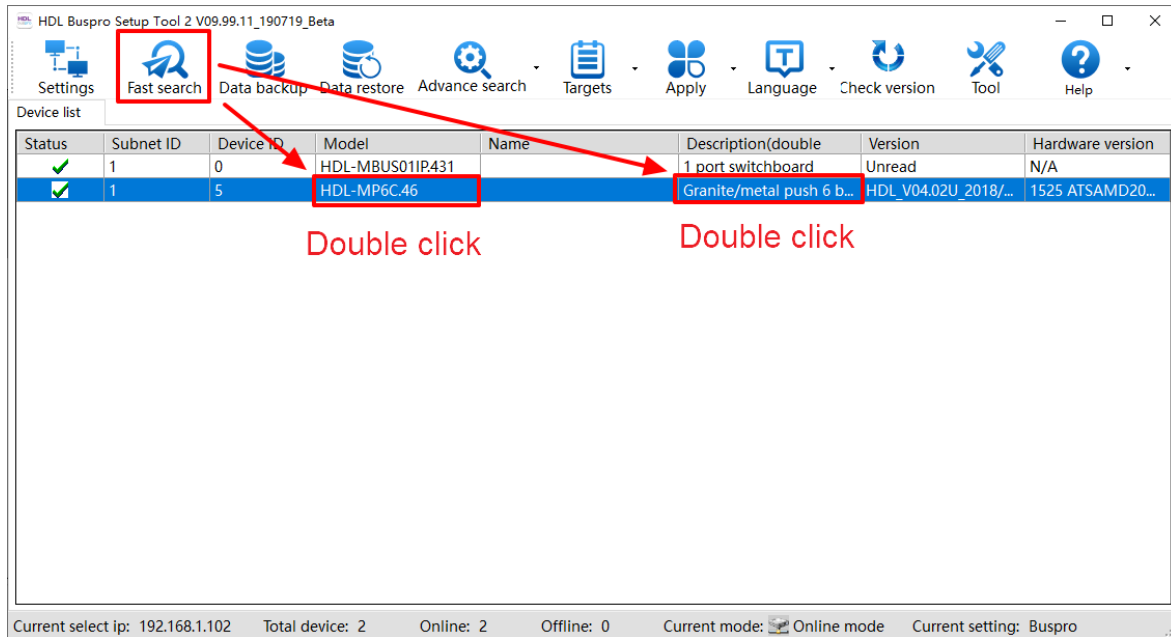


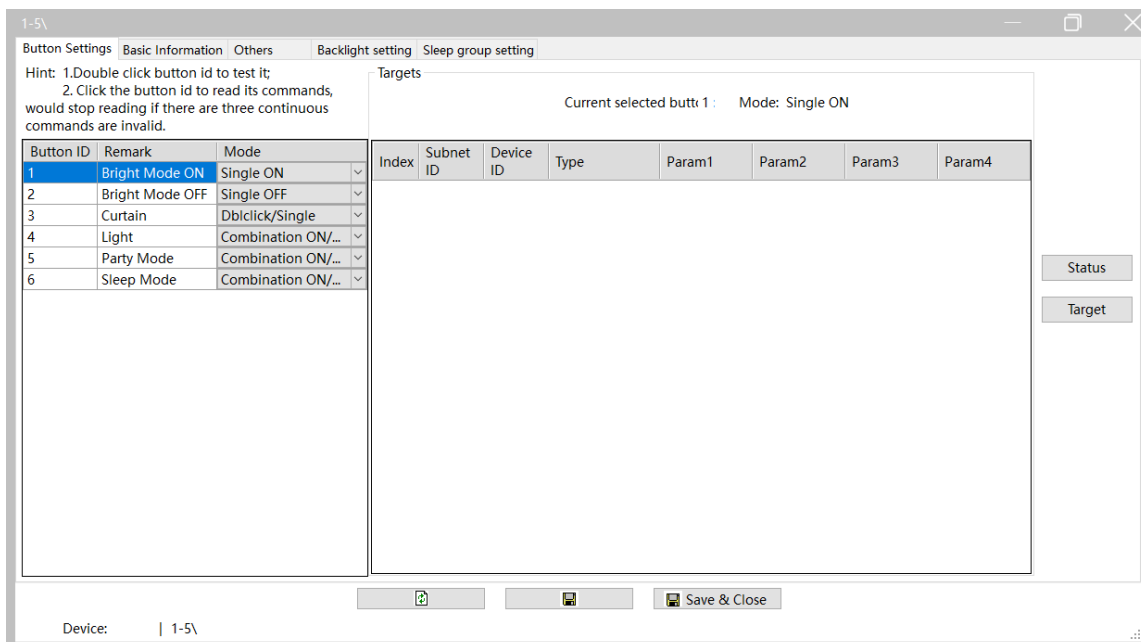
Figure 1-1 Button ID and backlight ID (Left: EU, Right: US)

➤ **How to enter configuration page?**

1. Connect the panel to the system, and open Buspro Setup Tool 2 in the computer.
2. Click “Fast Search”.
3. Double click the “Model” or “Description” column to enter configuration page, as shown in Figure 1-2, Figure 1-3.



**Figure 1-2 How to enter configuration page**



**Figure 1-3 Configuration page**

## 2 Basic Setting

Click “Basic Information” in configuration page, as shown in Figure 2-1. This page includes the following setting items:

- ① Indicator Intensity: includes LCD backlight and status indicator (button indicator) brightness adjustment
- ② Press time setting:
  - Long Press: keep pressing the button longer than the time period, and the system will identify as “Long Press”. The range is from 0.3s to 25s.
  - Double Click: The time interval between two clicks shorter than the set time period will be identified as “Double Click”. The range is from 0.1s to 2s.
- ③ Min. dimming value setting: means the minimum dimming value. The light brightness will not decrease below this value during dimming operation.
- ④ Auto Lock: if enabled, the panel will be locked in 20s after the last operation. Press Button 1 and 6 (Button 1 and 4 for EU panel) can unlock/lock the panel.
- ⑤ Analog information setting: to enable/disable timing analog broadcast, or read panel voltage
- ⑥ Broadcast temperature: Built-in temperature probe in Granite Panel enables temperature detection. The temperature data can be broadcast to corresponding device if the Subnet ID and Device ID is set. The temperature data can be adjusted with the slider.

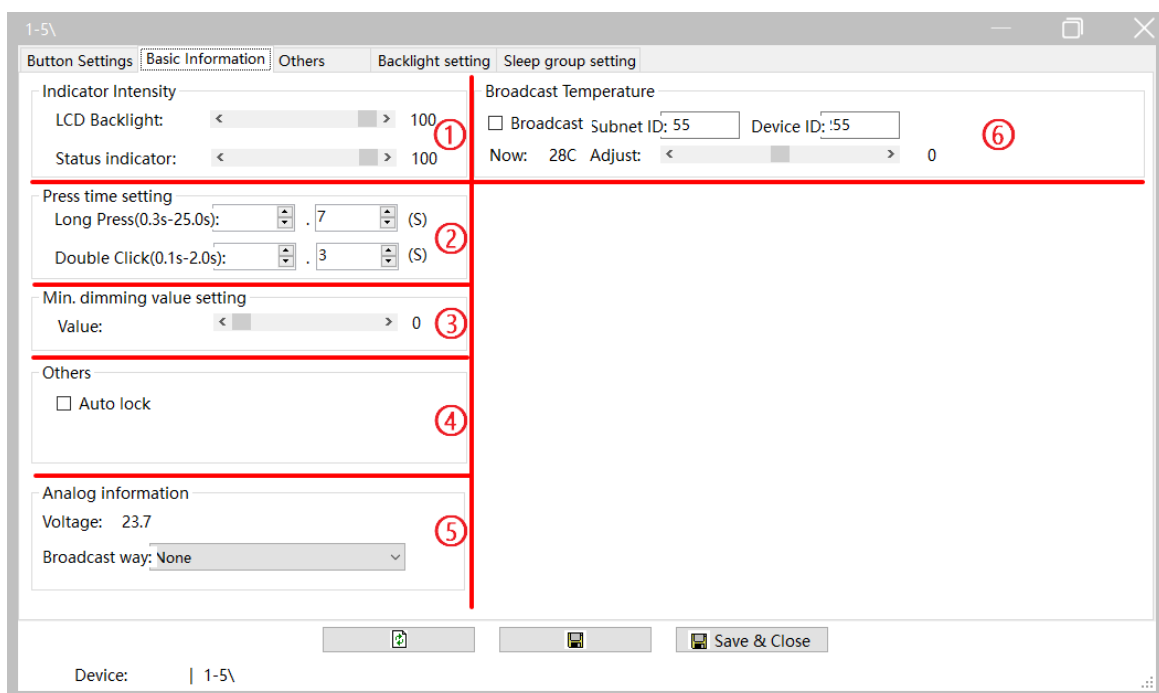


Figure 2-1 Basic information setting

## 3 Button Setting

“Button Setting” page will be opened by default in configuration page, as shown in Figure 3-1.

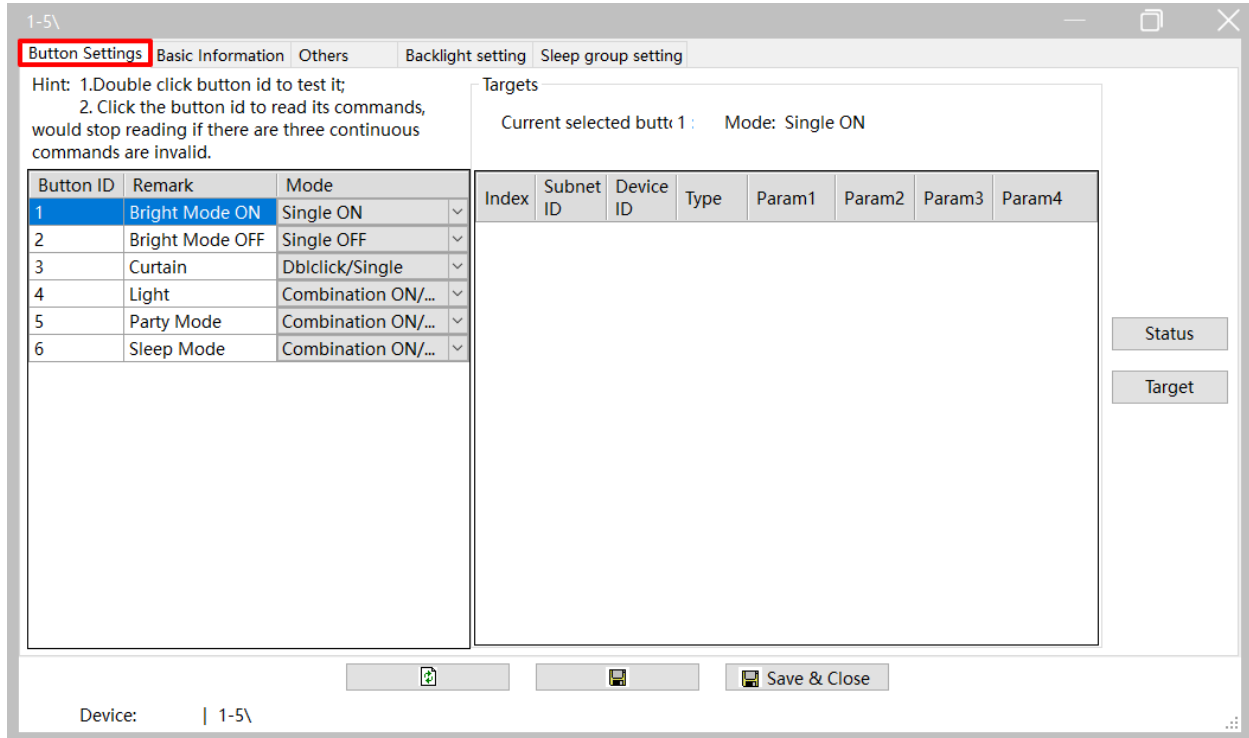


Figure 3-1 Button setting

### 3.1 Button Mode Setting

User may set button mode and button remarks on the left of Button Setting page.

### 3.2 Button Status Setting

Click “Status” Button to open Button Status window, as shown in Figure 3-2. This page includes the following setting items:

- ① Status indicator: to enable/disable the status indicator of corresponding button.
- ② Dimming: to enable/disable the dimming function of this button.
- ③ Dimming value: if enabled, the panel may memorize the dimming status of the lights when the light is turned off, and recall the status when the light is turned on next time.



- ④ Mutual: only available when “Combination ON”, “Combination OFF” or “Combination ON/OFF” is selected. The ON/OFF status of the selected buttons are mutually exclusive. Only one group of exclusive relationship is available in Granite.
- ⑤ Linkage: only available when “Single ON”, “Single OFF” or “Single ON/OFF” is selected. Enter the button ID to link 2 buttons together for controlling one same target. The target of the button with the smaller ID should prevail, while 0 means no button is linked to this button.

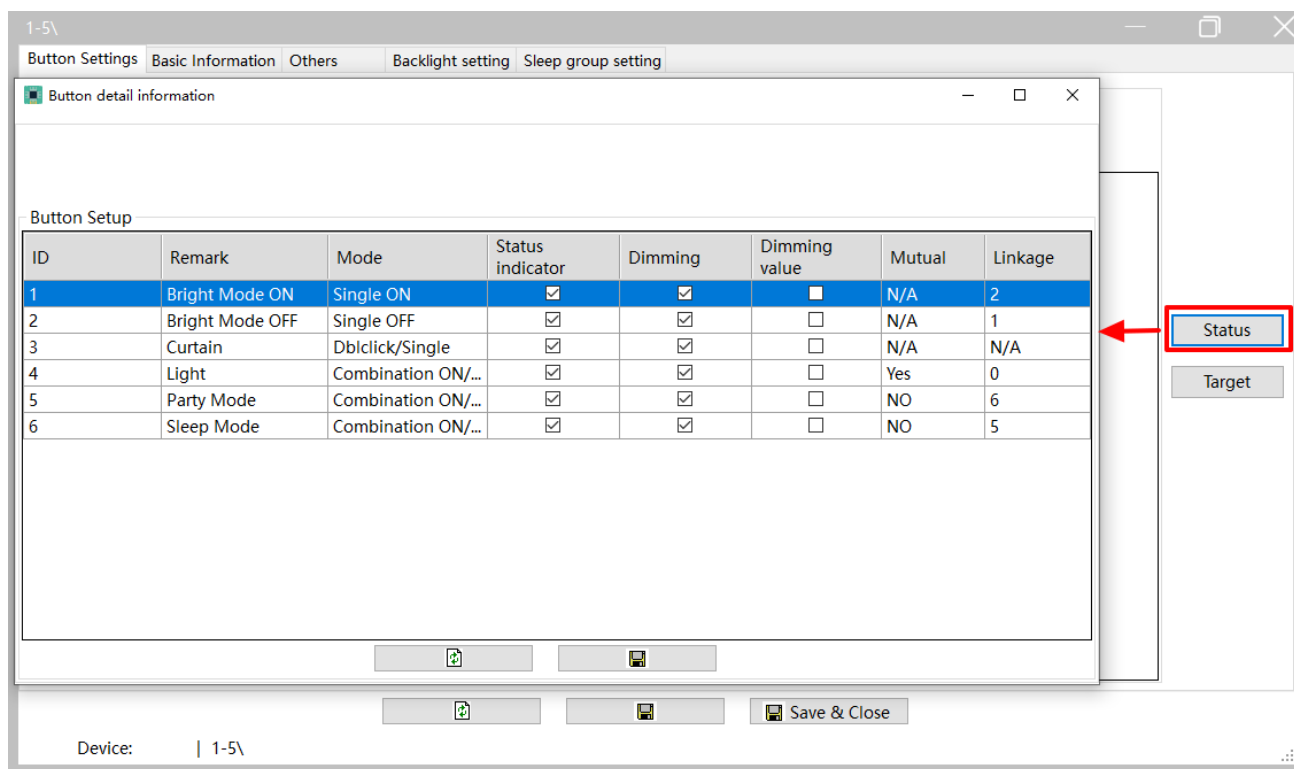


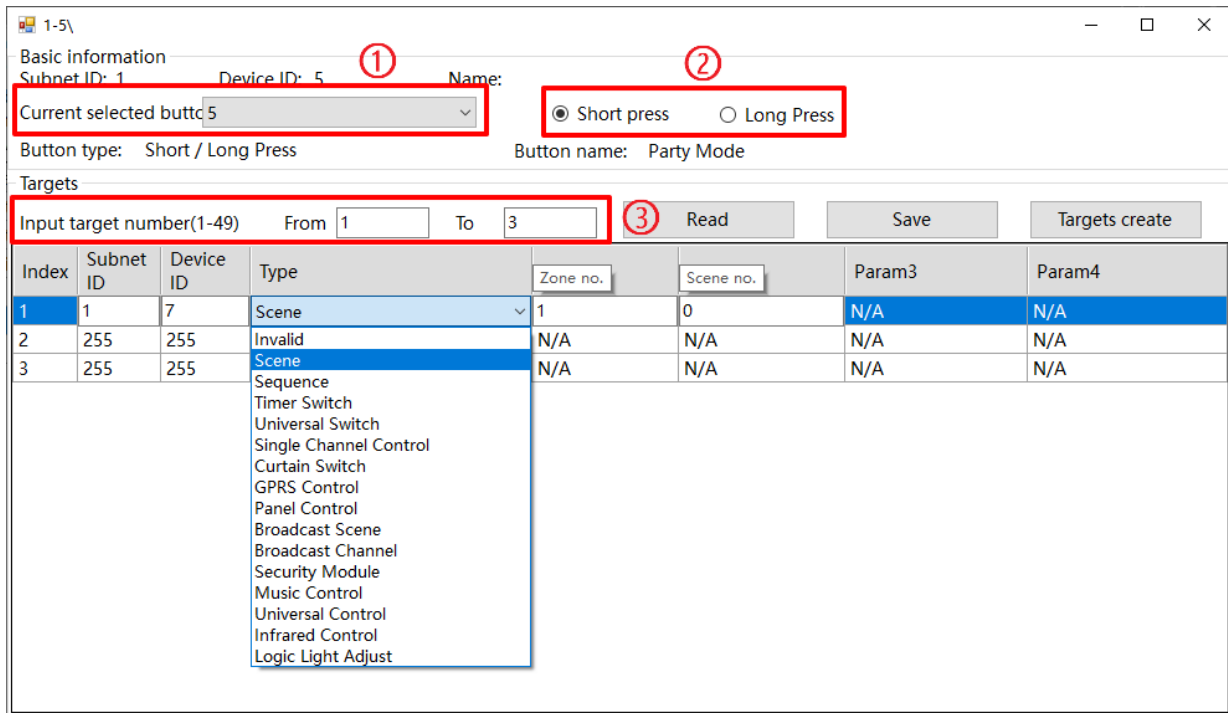
Figure 3-2 Button status setting

### 3.3 Target Setting

Select the button for target configuration on the left, and click “Target” button on the right to open “Target Configuration” window, as shown in Figure 3-3.

**Notice:**

The number of the target depends on the button mode, ONLY one target is supported except “Combination ON”, “Combination OFF”, “Combination ON/OFF”, “Double click/combined”, “Short/long press”, “Short press/long jog”.



**Figure 3-3 Button target configuration**

If the button supports two or more targets, then the user can add target. This part takes “adding two more targets to the long press mode of Button 1” as an example.

1. Set the mode of Button 1 to “Short/long press” on the left of button configuration page.
2. Select Button 1, and click “Target Configuration” to open target configuration window.
3. Select “Long Press” in button status type (Mark ② of Figure 3-3).
4. The total target number will be 3 if 2 more targets is to be added as there’s 1 target by default. Thus, enter “from 1 to 3” in “Input target number”, and click “Read” button.
5. Then there will be 3 targets in the target list below.
6. Click the target in target list, and edit its Subnet ID, Device ID, Type, and other parameters (according to the selection of Type). Click “Save” to save changes.

**Notice:** About “Target Creation”

“Target Creation” provides a more convenient way to add target(s) to the button. Its function is similar to creating scenes and add it to the button in order for the button to control the targets.

The following two ways can be followed to enter “Target Creation”:

- ① Click “Targets” → “Targets Templates” in the main page of Buspro Setup Tool 2.
- ② Click “Button Settings” → “Targets” → “Targets create”.

The following 4 areas are included in this page, as shown in Figure 3-4:

- ① Device list: includes the devices that has been searched in Buspro Setup Tool.
- ② Device button list: shows the buttons of the device, and device can be selected above.
- ③ Template list
- ④ Template target list: includes the targets of current template.

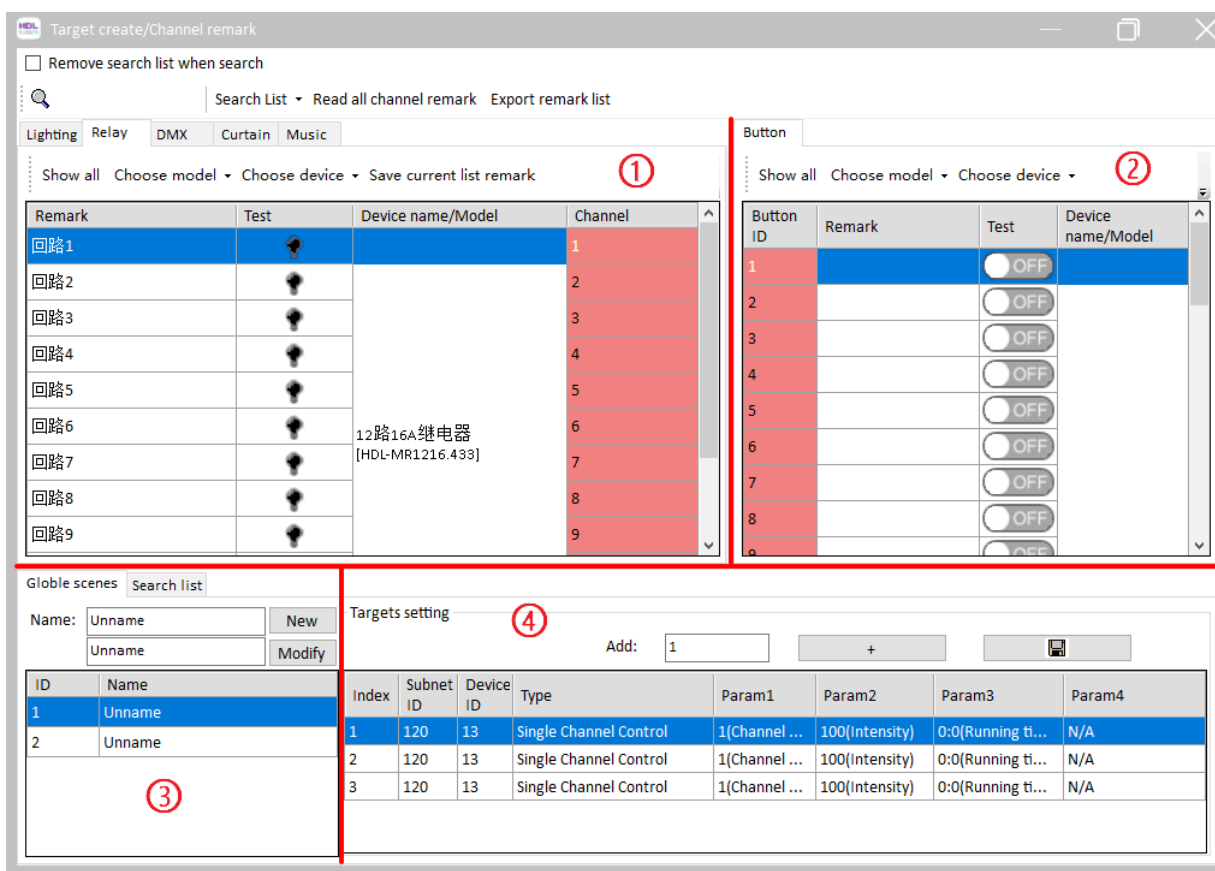


Figure 3-4 Target creation

To edit template, select the template in ③ and edit in ④. “Template” is only for saving the targets temporarily in order for editing and is not assigned to any button.

User may add the target to the button in either of the following 2 ways:

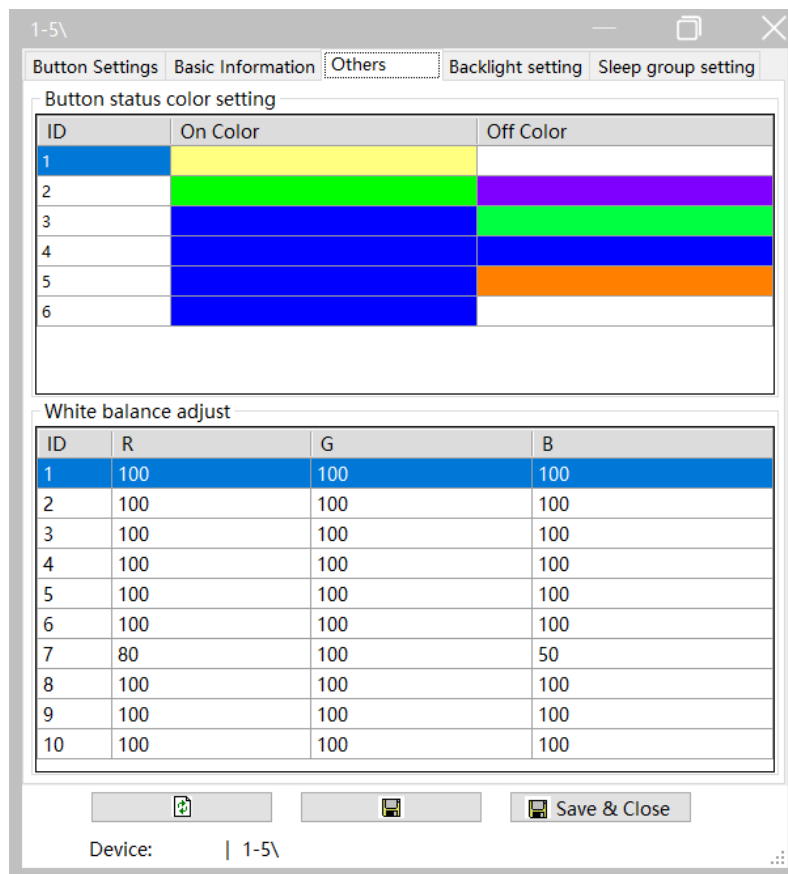
- ① Drag the device in ① (red part) to corresponding button in ② (red part).

- ② Select the targets in ④ (multi-selection with Shift/Ctrl supported), right click and select “Copy selected row”. Return to Button Target Configuration Page (Figure 3-3) and right click on target list and select “Paste”, then click “Save”.

## 4 Color Setting

Click “Others” in configuration page, as shown in Figure 4-1. Color Setting includes the following 2 setting options:

- ① Button Status Color Setting
- ② White Balance Adjustment



**Figure 4-1 Color setting**

### 4.1 Button Status Color Setting

One button may be set with different color according to its status. On color and off color are included in this setting area:

1. On color: The indicator color when the target is on
2. Off color: The indicator color when the target is off

## 4.2 White Balance Adjustment

If the indicator color is not accurate, please set the button indicator color to white in “Button Status Color Setting”, and edit the RGB value (from 0 to 100) in “White Balance Adjustment” to adjust white color, in order for correct indicator color.

### **Notice:**

In white balance adjustment, ID 1-4 are buttons, 5-6 are backlights for EU panel; while ID 1-6 are buttons, 7-10 are backlights for US panel, as shown in Figure 1-1.

## 5 Backlight Setting

Click “Backlight setting” in configuration page, as shown in Figure 5-1. This page includes the following setting items for backlight:

1. Status: to select the status and set the backlight for corresponding status (Normal/Sleep).
2. Backlight brightness: (only available for “Sleep” status) to set the backlight brightness when the panel enters sleep mode.
3. Delay: (only available for “Sleep” status) to set the time from the last operation to the panel enters sleep mode.
4. Color: to select the color for the backlight.

### Notice:

1. For US panel, ID 1-4 here are referred to ID 7-10 in Figure 1-1, while for EU panel, ID 1-2 are referred to ID 5-6 in Figure 1-1.
2. Please refer to [White Balance Adjustment](#) for backlight color adjustment.
3. The color of normal status and sleep status should be the same.

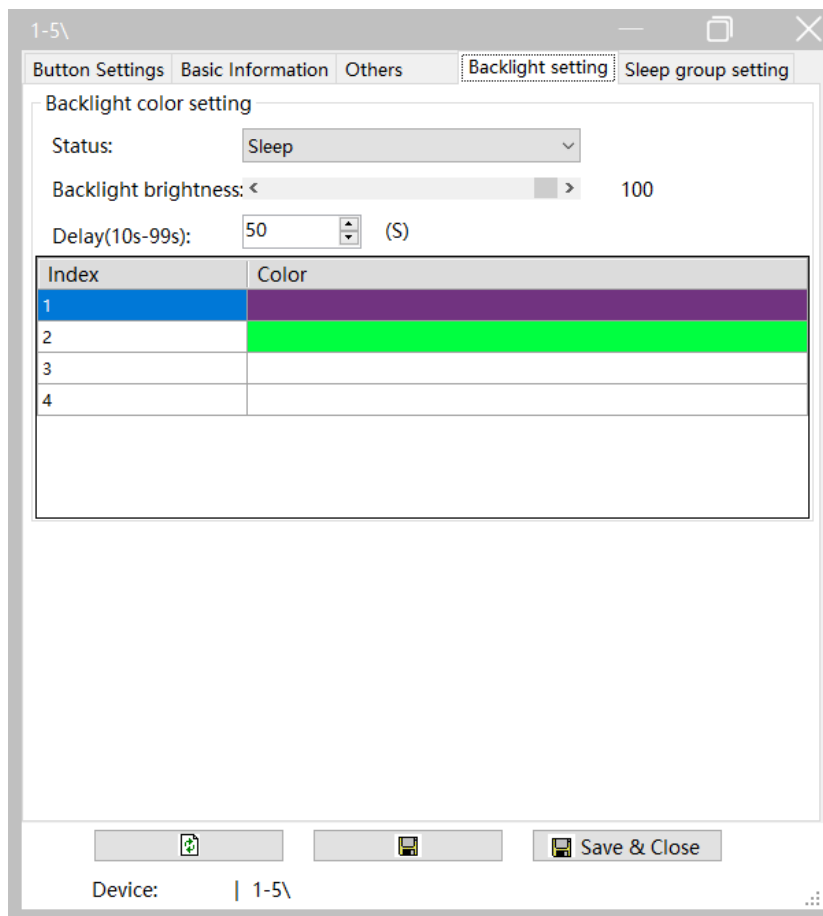


Figure 5-1 Backlight setting

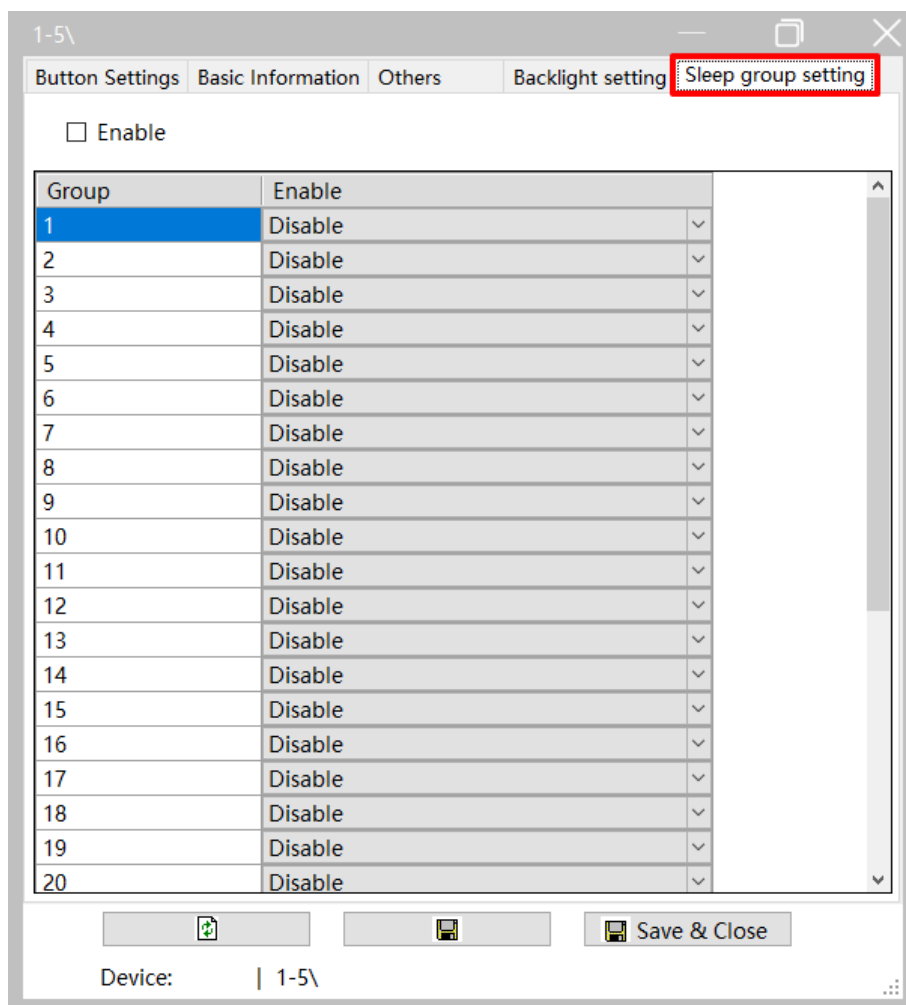
## 6 Sleep Group Setting

There are two status for granite: Sleep and Standby

- Sleep: triggered by command, and the panel will enter sleep mode (similar to pressing the power button for the mobile phone to enter sleep mode)
- Standby: in a set period of time after last operation, the system enters standby mode automatically (similar to the mobile phone entering standby mode with no operation for a short period of time).

“Sleep Group” refers to the following situation: if one panel is woken up from sleep/standby mode, other panel(s) in the same sleep group will be woken up as well. Through configuration, one panel can send command for all the panel(s) in the same sleep group to enter sleep mode. Despite that the standby status of the panels in the same sleep group stay independent.

Click “Sleep Group Setting” in configuration page, as shown in Figure 6-1.



**Figure 6-1 Sleep group configuration**

Select “Enable” to enable the sleep group function of the panel, otherwise the panel stays independent in the system and its sleep status does not affect other panels.

Add the panel to the corresponding sleep group by selecting “Enable”. The system has 32 sleep groups by default. Select “Enable” to add the panel to the corresponding sleep group, and when the panel is woken up, other panels in the same sleep group will also be woken up.